

Sheriff Russell Thomas (PCSO)
Chief Randall Barr (TPD)
Chief Moses Davenport (BPD)
Chief Michael Stephens (TFD)
*encourage you to take advantage
of this FREE program.*



Although the **YELLOW DOT PROGRAM** is geared primarily toward senior citizens, anyone may participate.

A **YELLOW DOT** in the rear window of your vehicle will alert all First Responders to the vital information in your glove compartment. This will help to ensure that you receive the medical attention you need during that first **"GOLDEN HOUR"** after a crash or other emergency involving your vehicle.

*Sign up today for
yourself and your family!*

The **YELLOW DOT PROGRAM** is the first of its kind in the the State of Alabama. The program is cooperative effort between Sheriff's Deputies, local Police Officers, State Troopers, Emergency Medical Services, local Fire Departments, and Senior Centers to assist our citizens in a time of need when they might not be able to help themselves.

Where to sign up:

Pike County Sheriff's Office
120 Church Street
Troy, Alabama
334.566.4347

Troy Police Department
300 Elm Street
Troy, Alabama
334.566.0500

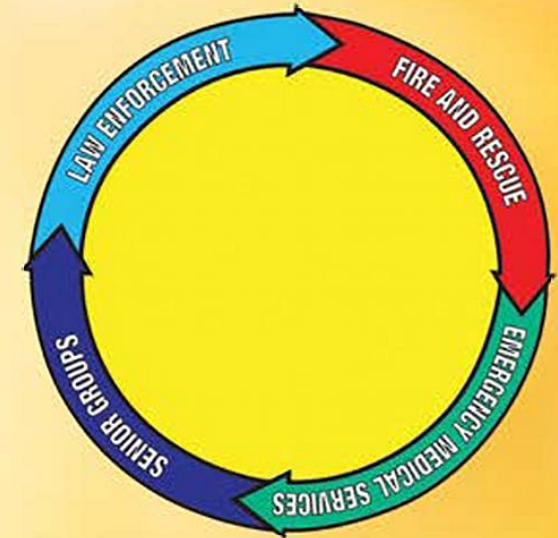
Troy Fire Department
200 South George Wallace Drive
Troy, Alabama
334.566.0177

Brundidge Police Department
115 N. Main Street
Brundidge, Alabama
334.735.3333

Sponsored and funded by:

*Pike County Sheriff's Department
Troy Police Department
Troy Fire Department
Brundidge Police Department
ADECA/LETS*

YELLOW DOT PROGRAM



*Citizens And First Responders
Working Together to Preserve The
"GOLDEN HOUR"
of Emergency Care*

*The Yellow Dot Program was created
to assist citizens during automobile
accidents when they might not be
able to communicate for themselves.*

How does the **YELLOW DOT** Program Work?

The four items needed are a photo, a completed personal information form, a **YELLOW DOT** decal, and a **YELLOW DOT** folder.



1 First Step

A photograph is taken of the participant. The photo is later taped to the front side of the completed information sheet.



2 Second Step

Complete the form which contains the participant's information; name, address and phone number of person to contact in case of an emergency; medical history; allergies; medications and dosage taken; and names of doctors caring for the participant.



3 Third Step

A **YELLOW DOT** is placed in the lower left corner of the rear window of the participant's automobile on the driver's side to alert First Responders that vital medical information can be found in the glove compartment of the vehicle.



4 Fourth Step

The final step is to place the completed information sheet, with picture attached, into the **YELLOW DOT** folder and then put the folder into the glove box where first responders are trained to look when they see a **YELLOW DOT** in the rear window. That's all there is to it!

