

# Stealth Technology Preferred Examples

This document contains photographs and illustrations of examples of the types of preferred acceptable collocation, stealth technology, and other design aesthetics that may be used when placing small cell facilities in the City on poles and other Support Structures and other applications of stealth technology.

*Please note that this is not an all inclusive representation.*



City of Troy, Alabama  
Planning Department  
301 Charles W. Meeks Avenue  
PO Box 549  
Troy, Alabama 36081  
(334) 670-6058  
planning@troyal.gov  
www.troyal.gov/planning



# Small Cell Pole Collocation Installation Minimized Visual Examples

This document contains photographs and illustrations of examples of the types of acceptable collocation, stealth technology, and other design aesthetics that may be used when placing small cell facilities in the City on poles and other Support Structures and other applications of stealth technology.

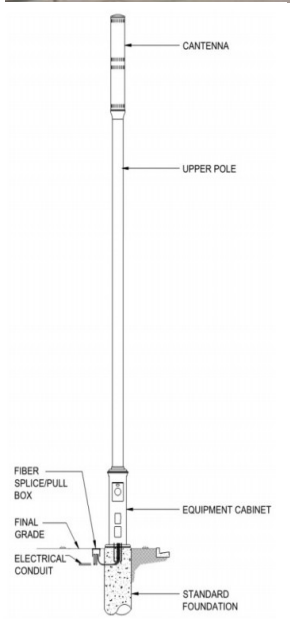
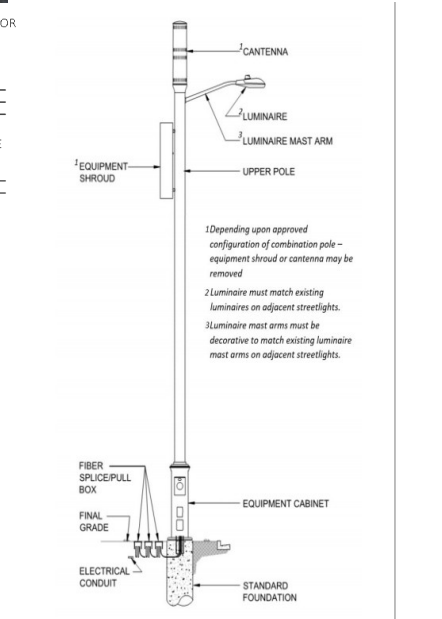
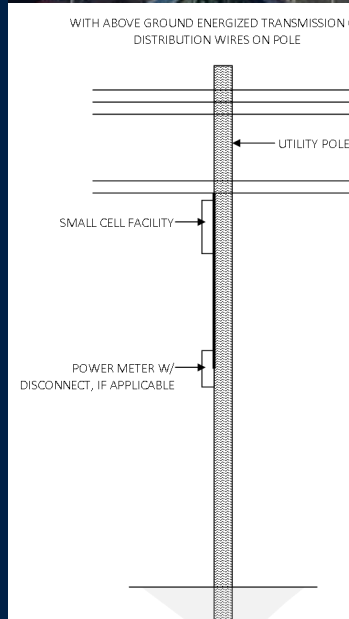
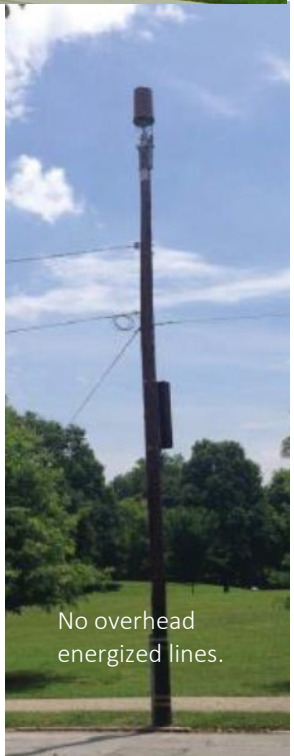
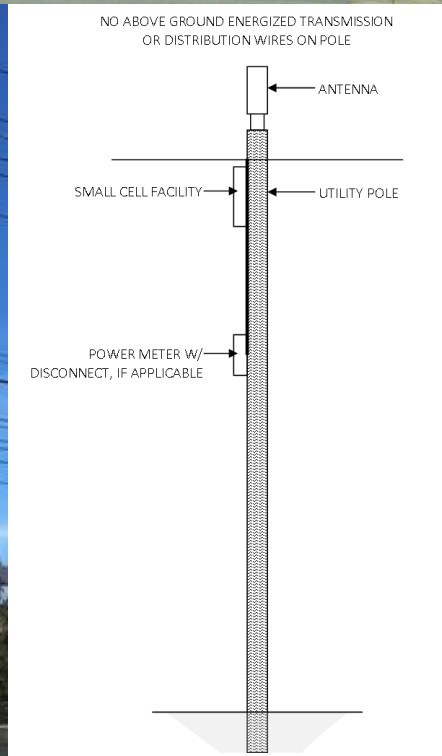
## Acceptable:

- Small unobtrusive facilities at the telecommunications line/ height without cluttered appearance and/or wires.
- Simulated pole with internal facilities.
- Facilities narrower than, and in scale with the pole.
- Facilities consistent with other fixtures in the immediate vicinity without cluttered appearance and/or wires.
- Facilities must meet all NESC clearance requirements.

*Some types of collocations may not be acceptable in all areas on the city, such as, but not limited to historic districts, residential neighborhoods and other areas with underground utilities. Please note that this is not an all inclusive representation.*

## City of Troy, Alabama Planning Department

301 Charles W. Meeks Avenue  
PO Box 549  
Troy, Alabama 36081  
(334) 670-6058  
planning@troyal.gov  
www.troyal.gov/planning



# Small Cell Pole Collocation Installation Minimized Visual Examples

This document contains photographs and illustrations of examples of the types of acceptable collocation, stealth technology, and other design aesthetics that may be used when placing small cell facilities in the City on poles and other Support Structures and other applications of stealth technology.

## Acceptable:

- Small unobtrusive facilities at the telecommunications line/ height without cluttered appearance and/or wires.
- Simulated pole with internal facilities.
- Facilities narrower than, and in scale with the pole.
- Facilities consistent with other fixtures in the immediate vicinity without cluttered appearance and/or wires.
- Facilities must meet all NESC clearance requirements.

*Some types of collocations may not be acceptable in all areas on the city, such as, but not limited to historic districts, residential neighborhoods and other areas with underground utilities. Please note that this is not an all inclusive representation.*

## City of Troy, Alabama Planning Department

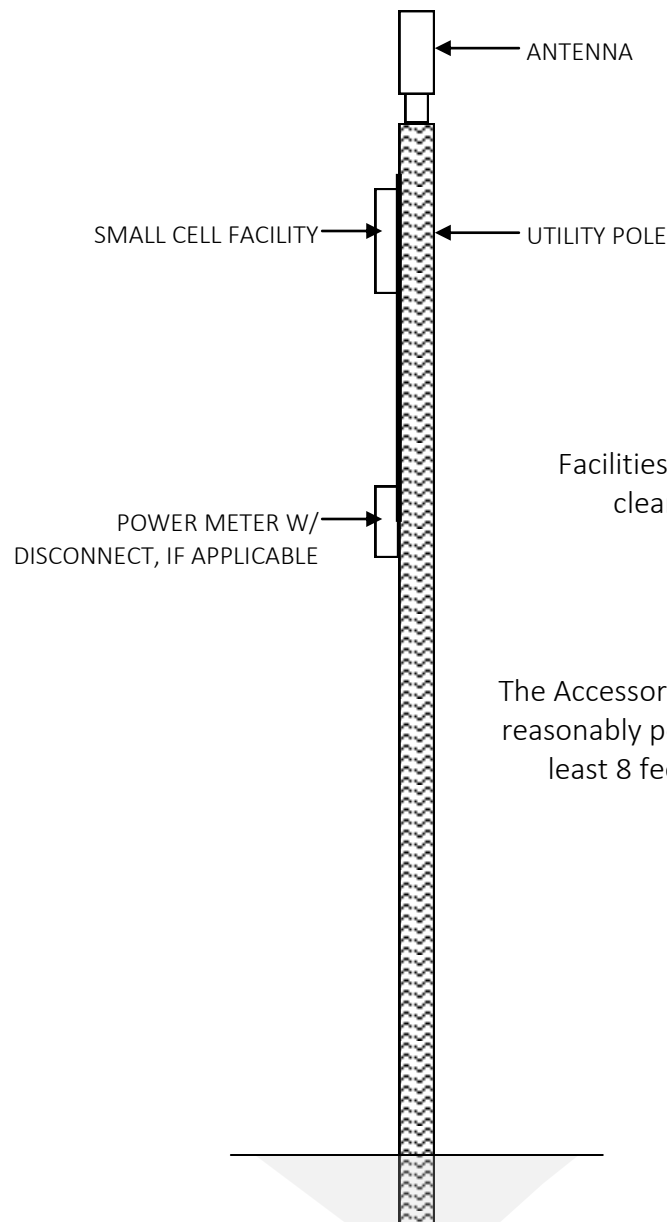
301 Charles W. Meeks Avenue  
PO Box 549  
Troy, Alabama 36081  
(334) 670-6058  
planning@troyal.gov  
www.troyal.gov/planning



Commercial/Industrial Area



NO ABOVE GROUND WIRES ON POLE



Facilities must meet all NESC clearance requirements.

The Accessory Equipment shall, if reasonably possible, be placed at least 8 feet above the ground



# Small Cell Pole Collocation Installation Minimized Visual Examples

This document contains photographs and illustrations of examples of the types of acceptable collocation, stealth technology, and other design aesthetics that may be used when placing small cell facilities in the City on poles and other Support Structures and other applications of stealth technology.

## Acceptable:

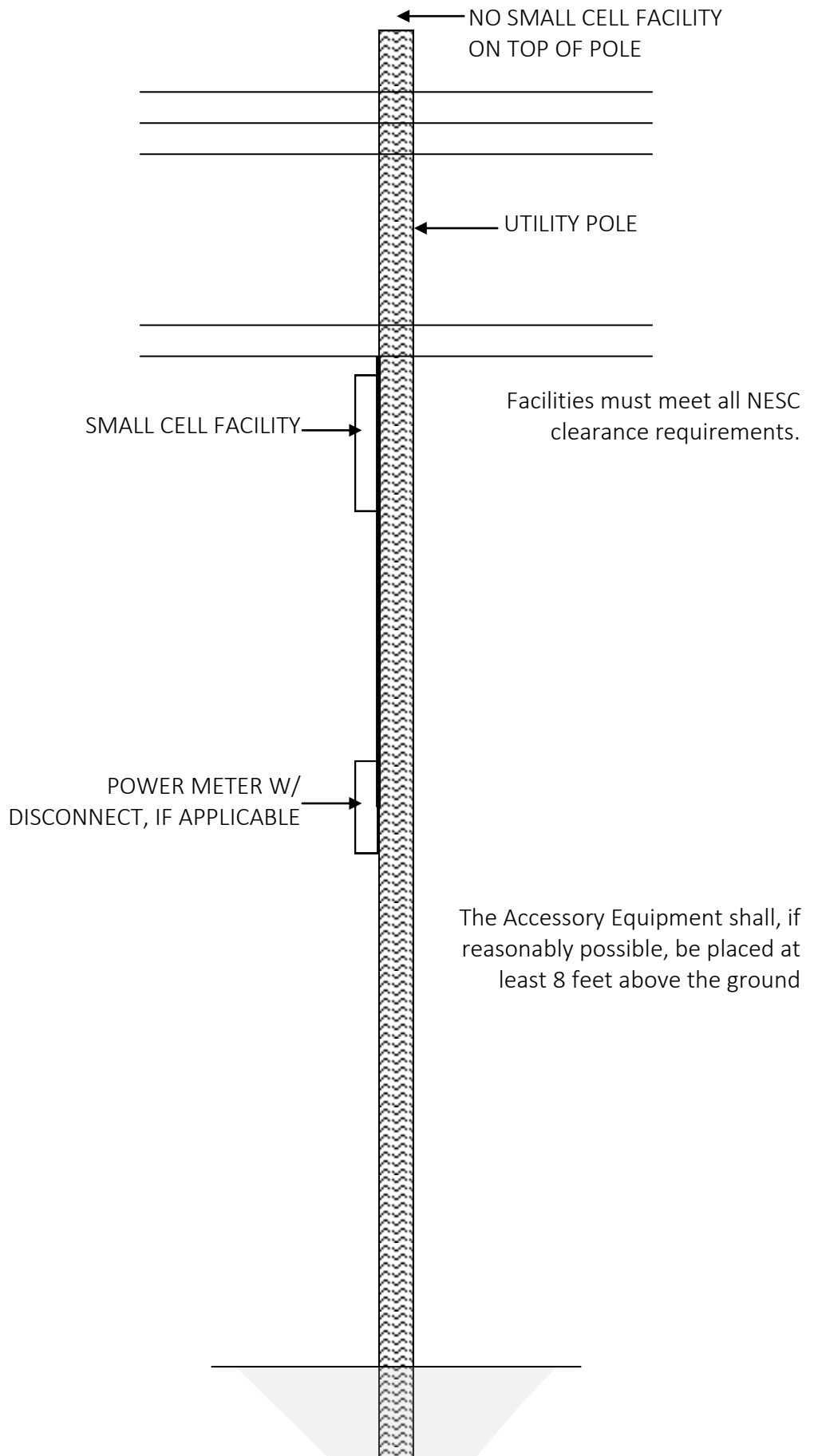
- Small unobtrusive facilities at the telecommunications line/height without cluttered appearance and/or wires.
- Simulated pole with internal facilities.
- Facilities narrower than, and in scale with the pole.
- Facilities consistent with other fixtures in the immediate vicinity without cluttered appearance and/or wires.
- Facilities must meet all NESC clearance requirements.

*Some types of collocations may not be acceptable in all areas of the city, such as, but not limited to historic districts, residential neighborhoods and other areas with underground utilities. Please note that this is not an all inclusive representation.*

## City of Troy, Alabama Planning Department

301 Charles W. Meeks Avenue  
PO Box 549  
Troy, Alabama 36081  
(334) 670-6058  
planning@troyal.gov  
www.troyal.gov/planning

WITH ABOVE GROUND ENERGIZED TRANSMISSION OR DISTRIBUTION WIRES ON POLE



# Small Cell Installation Examples (not acceptable)

This document contains photographs and illustrations of examples of the types of collocation other installations that are not acceptable and may not be used when placing small cell facilities in the City on poles and other Support Structures and other applications.

## Not Acceptable:

- Wireless facilities over energized wires.
- Facilities wider and out-of-scale with the pole.
- Facilities that extends horizontally from the pole.
- Facilities on arms.
- Facilities that create a cluttered appearance.
- Facilities with excessively exposed and/or cluttered wires.

*Please note that this is not an all inclusive representation.*



City of Troy, Alabama  
 Planning Department  
 301 Charles W. Meeks Avenue  
 PO Box 549  
 Troy, Alabama 36081  
 (334) 670-6058  
 planning@troyal.gov  
 www.troyal.gov/planning



# Stealth Technology Examples

This document contains photographs and illustrations of examples of the types of Stealth Technology that are acceptable and may be used when buildings are utilized as Support Structures and other applications of Stealth Technology.

*Please note that this is not an all inclusive representation.*

BEFORE



AFTER



Stealth using a Window Feature

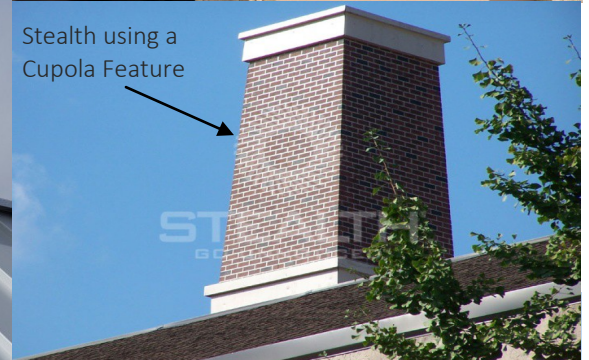
Stealth using a Cupola Feature



Stealth appearing to be an architectural feature on commercial building,



Stealth using a Cupola Feature



Stealth using a Brick Facade



Stealth using a Chimney Concealment in Goleta, CA



Stealth using a Rooftop Railing Concealment in Kiawah Island, SC



City of Troy, Alabama  
 Planning Department  
 301 Charles W. Meeks Avenue  
 PO Box 549  
 Troy, Alabama 36081  
 (334) 670-6058  
 planning@troyal.gov  
 www.troyal.gov/planning



# Small Cell Installation Examples (not acceptable)

This document contains photographs and illustrations of examples of the types of Stealth Technology that are not acceptable and not be used when buildings are utilized as Support Structures and other applications. Please note that this is not an all inclusive representation.

*Please note that this is not an all inclusive representation.*



City of Troy, Alabama  
Planning Department  
301 Charles W. Meeks Avenue  
PO Box 549  
Troy, Alabama 36081  
(334) 670-6058  
planning@troyal.gov  
www.troyal.gov/planning